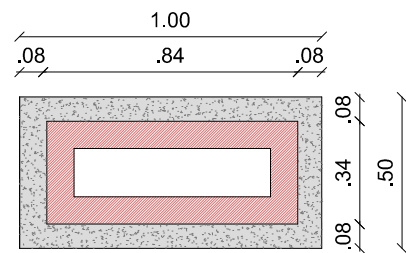
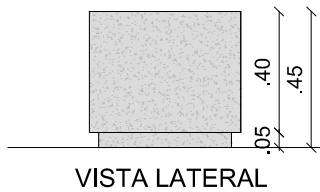
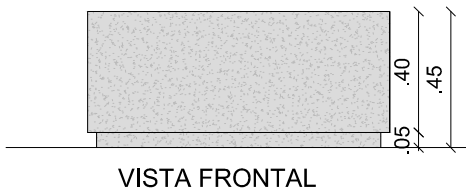
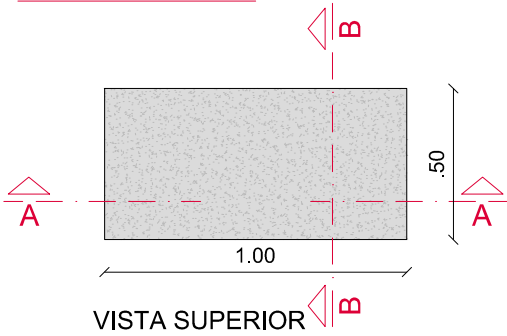
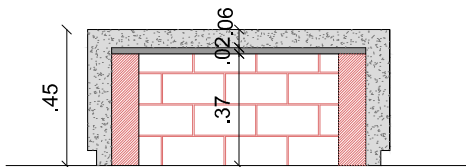


MÓDULO 01

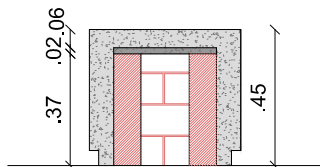
QUANTIDADE: 06 módulos



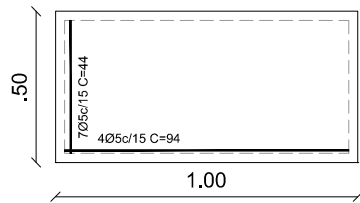
PLANTA BAIXA - corte h=.15 m



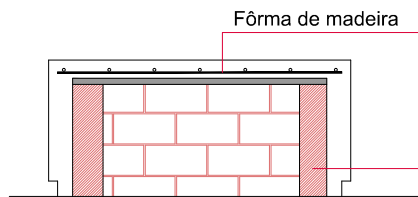
CORTE AA'- longitudinal



CORTE BB'- transversal



VISTA SUPERIOR



CORTE LONGITUDINAL - AA'

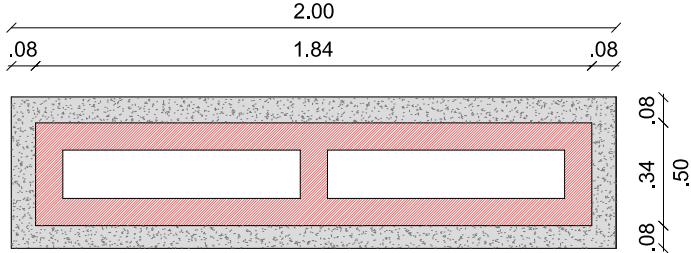
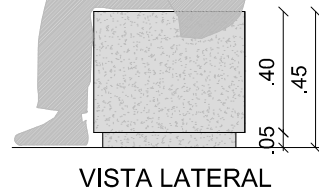
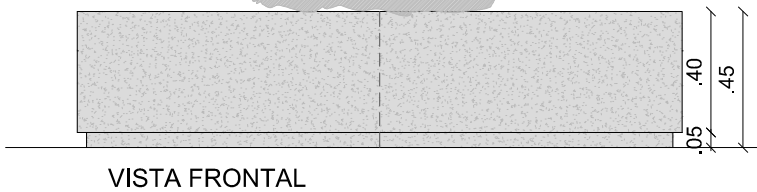
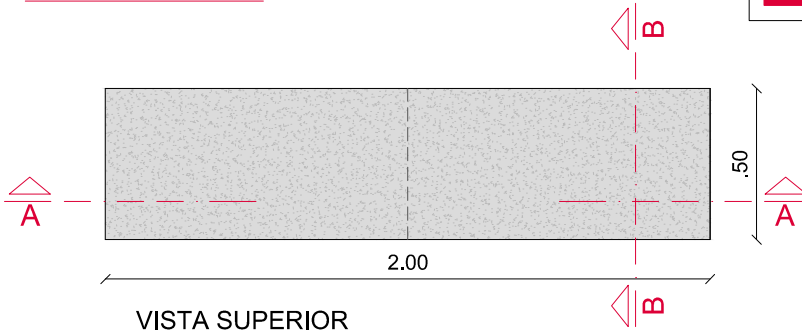


IMAGEM ILUSTRATIVA

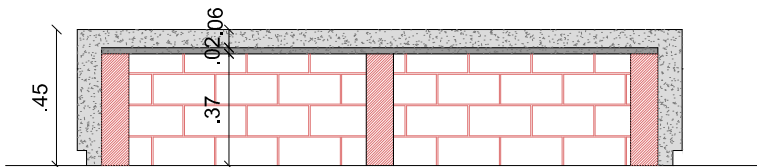
Tijolos furados
19 x 9 x 19 cm

MÓDULO 02

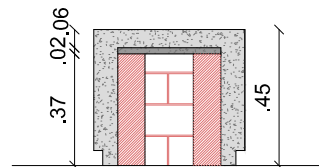
QUANTIDADE: 02 módulos



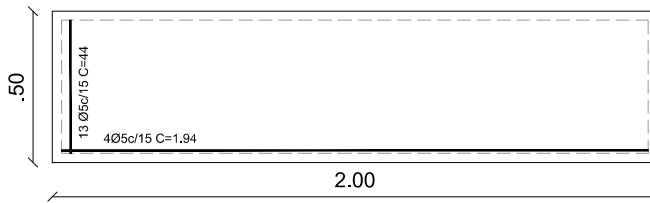
PLANTA BAIXA - corte h=.15 m



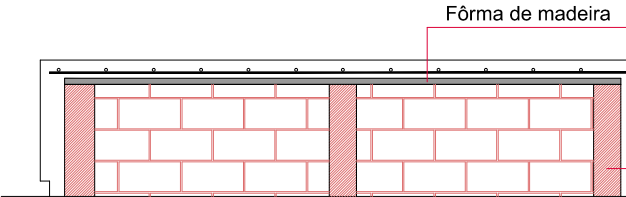
CORTE AA'- longitudinal



CORTE BB'- transversal



VISTA SUPERIOR



CORTE LONGITUDINAL - AA'



IMAGEM ILUSTRATIVA

Tijolos furados
19 x 9 x 19 cm



ROTA DA PRIMEIRA INFÂNCIA

DET. MOBILIÁRIO URBANO - BANCOS CONCRETO

Prancha

08/08

ENDEREÇO DA OBRA: RUA JOSÉ FAUSTINI Nº 341 .:. AREAL .:. PELOTAS / RS
- calçadas e muros em frente às EMEF Alm. Saldanha da Gama e EMEI Nelson Abott de Freitas -

EQUIPE TÉCNICA

Secretária Carmem Vera Roig - SGCMU
Arq. Daniela Tunes - CAU RS A 30898-6
Arq. Carolina Castro Neves - CAU RS A 53708-0
Arq. Adriana Fiala - CAU RS A 55662-9
Arq. Mariana Estima - CAU RS A 121124-2
Arq. Luiz Augusto King - CAU RS A 5955-2
Eng. Horácio Oliveira - CREA 37495

Escala

1 / 25

Data

AGO/2022

Rua Lobo da Costa, nº. 520, Centro, CEP 96010-150, Pelotas/RS - Tel.: (053) 3284-4405
Site: www.pelotas.rs.gov.br - E-mail: sgcmu.pelotas@gmail.com